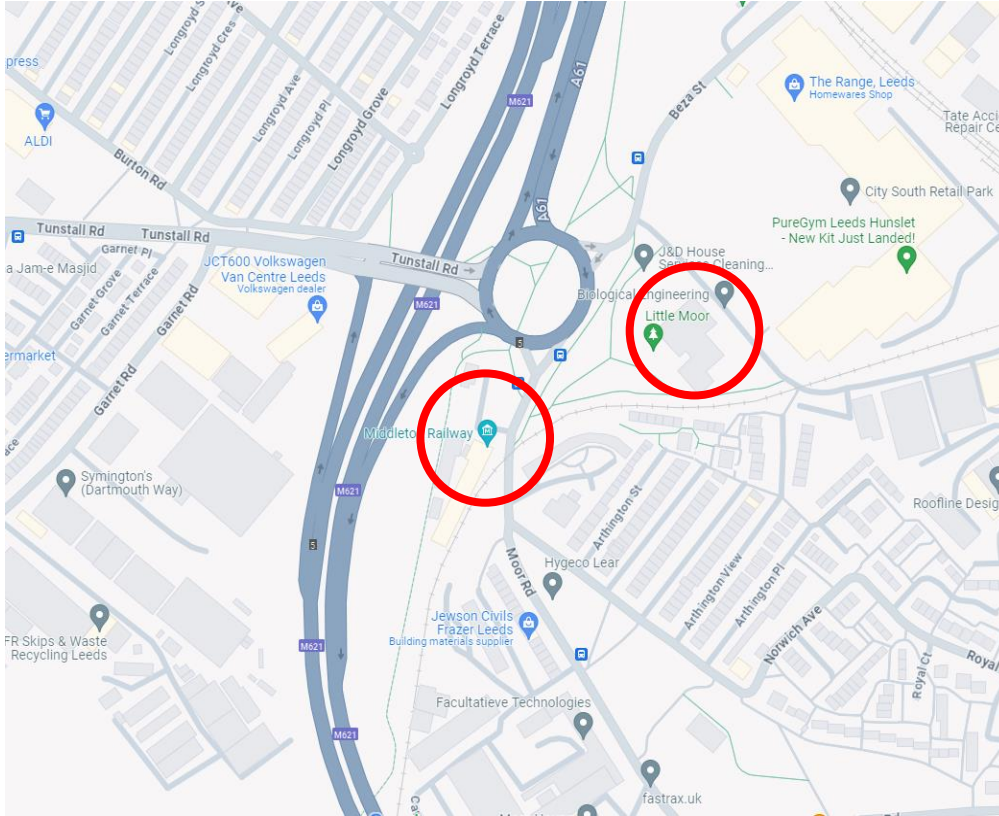


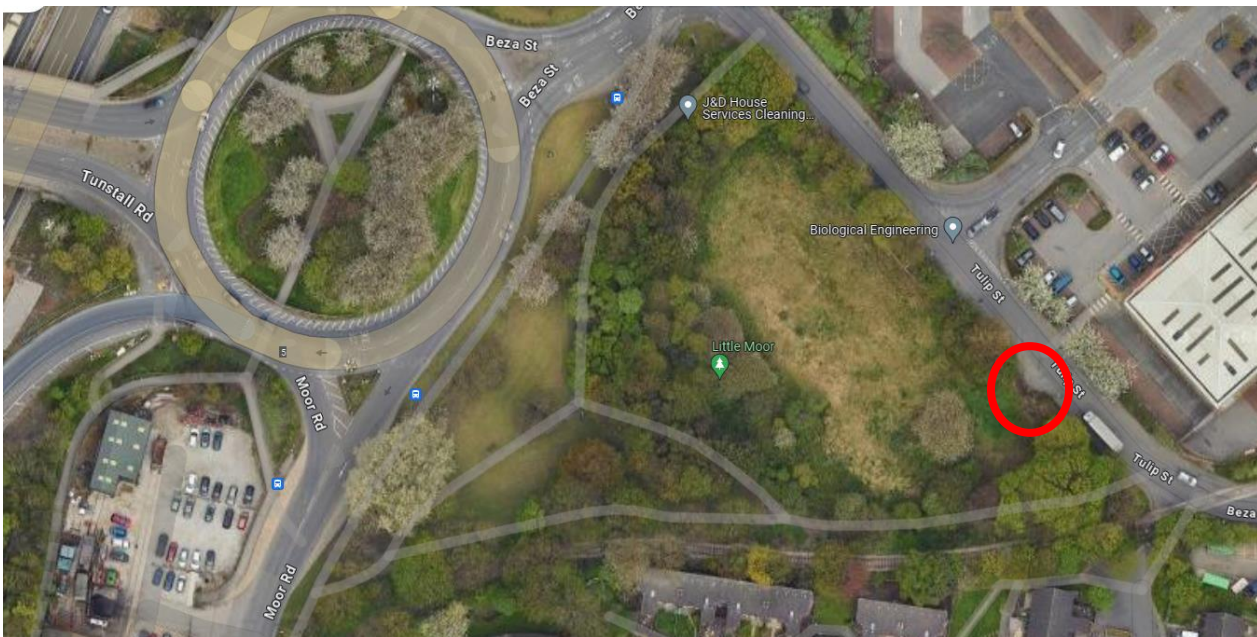
## Parking and Public Transport

During the event on August 3<sup>rd</sup> and 4<sup>th</sup> there will be no parking (apart from blue badge holders) at our Moor Road site, please park at the below location (ex-SLATE Centra grounds, opposite 'The Range' retail park). This site is a 2-minute walk from Moor Road along easily accessible footpaths. The parking will be signposted from our site at Moor Road and marshals will be available to help you once you arrive. **PLEASE NOTE THIS SITE CLOSES AT 7PM** so if you intend to stay later, you will need to re-locate your vehicle or use public transport.

### SLATE CENTRE LOCATION



### SLATE CENTRE ENTRANCE



## BUS ROUTES

If you'd like to enjoy the festival bars and don't have a nominated driver, or if you just fancy helping the environment, then why not travel to the festival by public transport? The easiest way from Leeds city centre is the 'White Rose Route' that runs to the White Rose shopping centre on a regular basis and includes buses 2,3,3A, 200 and 201. A link to the route is here:

<https://wymetro.com/media/7357/white-rose-corridor-map-with-logos.pdf>

Please alight at Burton Road or Hunslet Fire Station as indicated by the red circles and take the short walk to the railway (blue circle):

